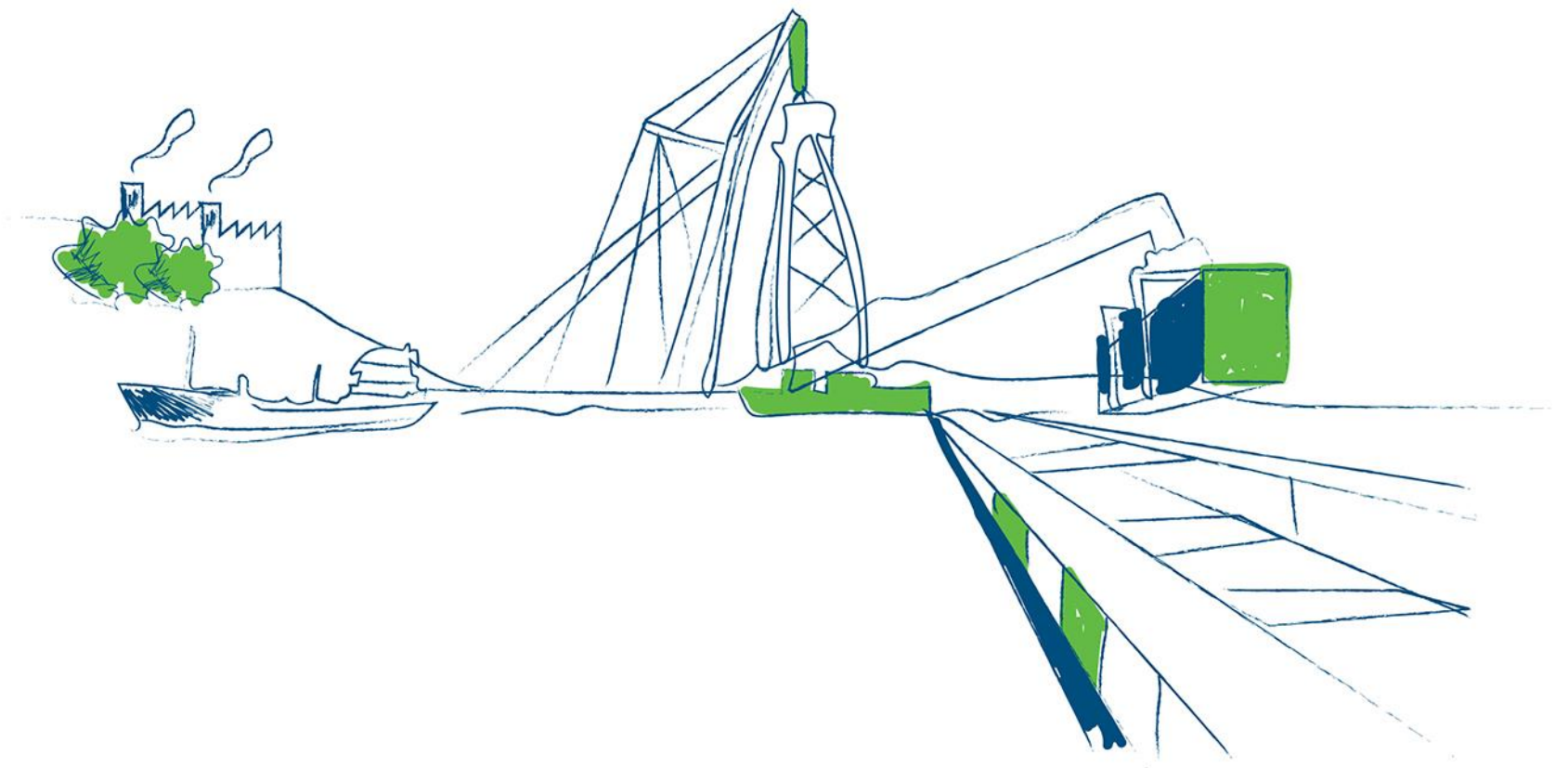




Nynäshamn
kommun

Department of Growth Management





New Department of Growth Management

- In 2017, work began on promoting increased growth and development by addressing issues about the conditions for establishment and entrepreneurship in the municipality.
- This work – led by a new Department of Growth Management below municipal executive committee – will be conducted in close dialogue with developers and traders in the municipality.

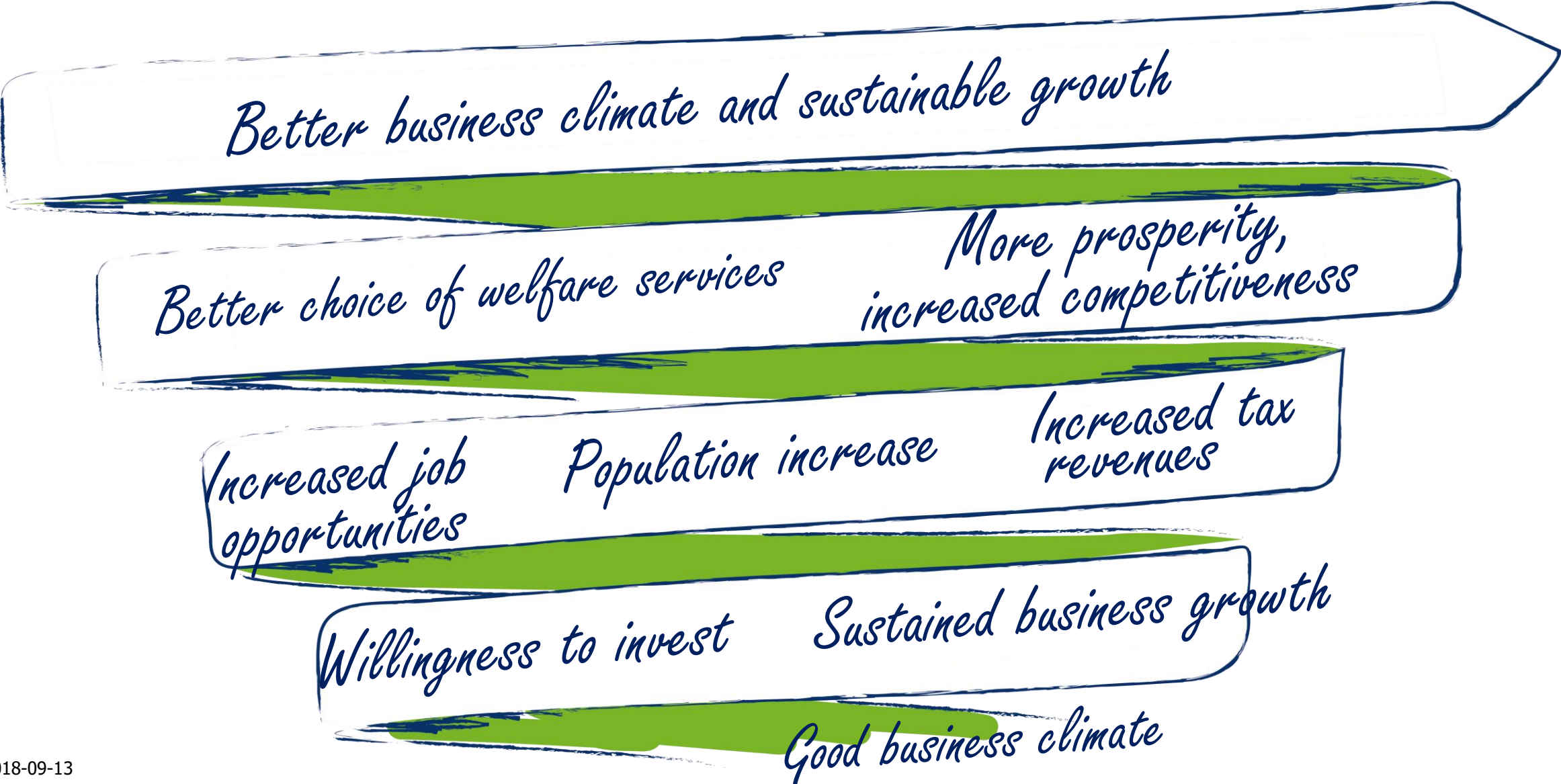


Focus on the business climate

- A good business environment provides increased growth
- Vision 2030

“Nynäshamn has Sweden’s best business environment and is a role model in Sweden’s largest growth region. Our success is built through cooperation, trust and pride”.

Upward spiral





OUR AIMS:

Five overall approaches

- Business issues should be prioritised
- The response should always be professional and friendly
- We will always cooperate if possible
- Sustainability will permeate all our work
- We will always lift our eyesight perspective – external projection



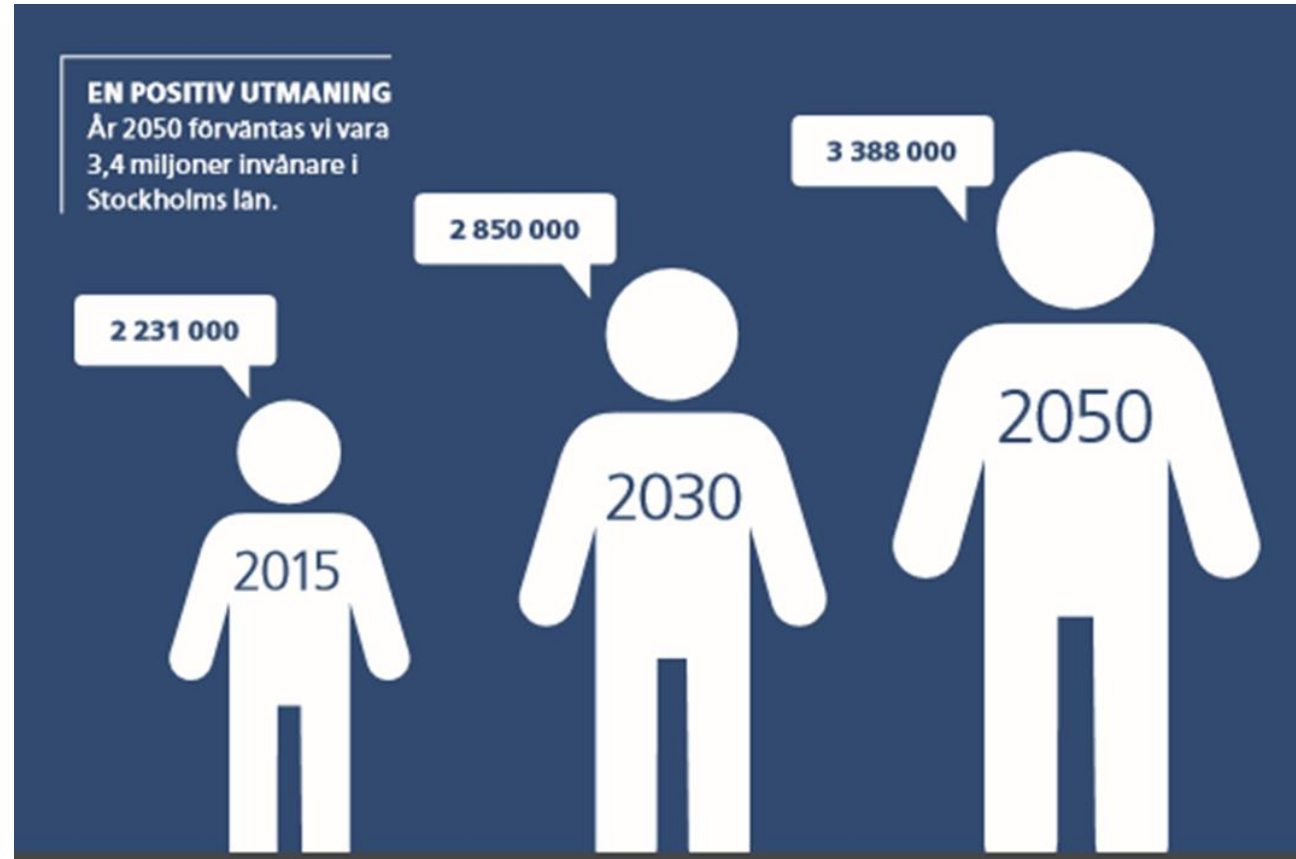
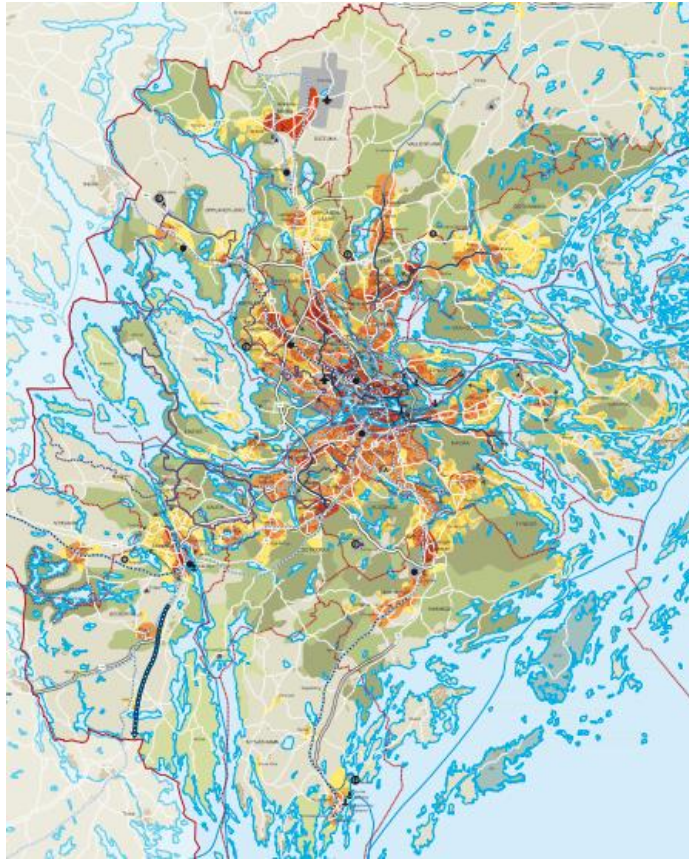
August 29th. Picture from the opening of Nynäs Ösbo Truck Centre's new - 27 metre long - laundry room for trucks and construction equipment.



That they are willing to invest 4.5 million Swedish crowns in an environmentally safe truck wash is due to the opening of Stockholm Norvik port.



The power of the Stockholm region





**FÅR VI
PLATS?**



CHALLENGES

It's crowded in Stockholm, if not to say overpopulated. Lack of housing has led to relocation.



Södertörn's municipalities



But even the municipalities have a shortage of housing. The countryside has gained a high level of attractiveness and status.

Perhaps as a counter-reaction to the congestion in Stockholm.



Quality of life

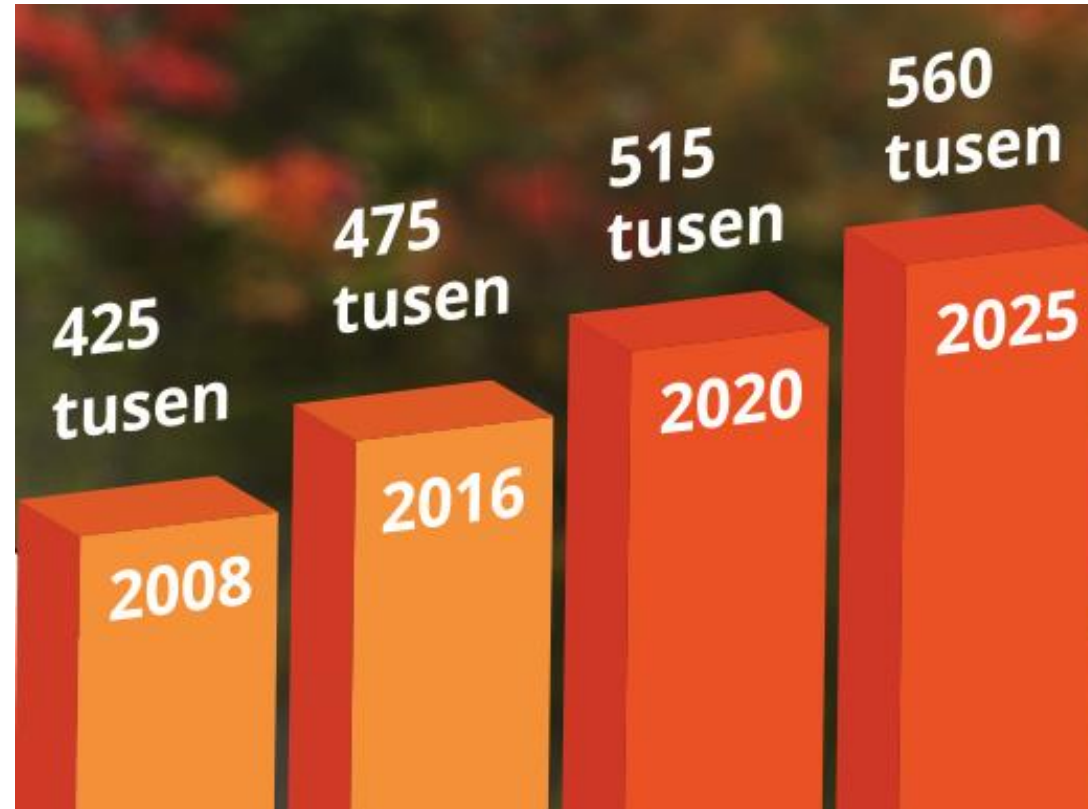
Nynäshamn is growing on all fronts, including housing, businesses and jobs.

But such growth requires attractive homes in close proximity to good public transportation.



Södertörn is experiencing rapid growth

- Södertörn is experiencing strong growth and increasing cohesion
- By population it corresponds to Sweden's 5th largest county
- 72,000 new homes by 2030
- 100,000 new jobs by 2030

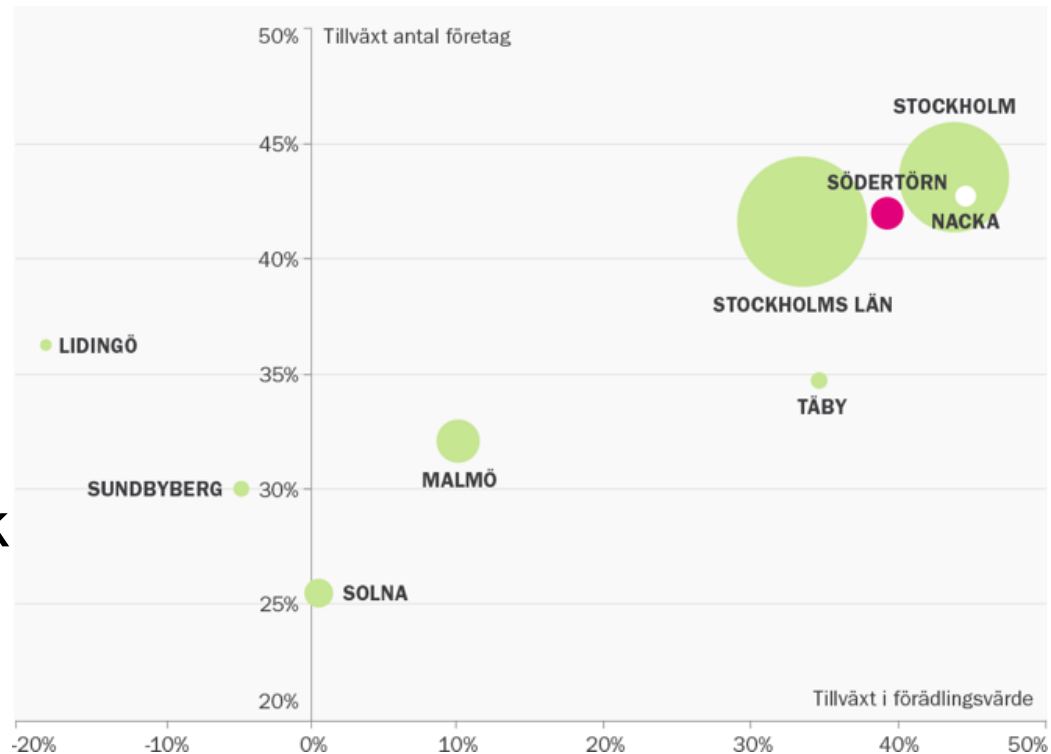




Rapid growth in business

- Faster business growth than Stockholm County as a whole
- More than one in three companies in Södertörn is fast-growing
- The development of Norvik port and Stockholm south provides the most new companies.

Where is the number of companies growing fastest? 2009–2014.





OPPORTUNITIES



Norvik port

UNDERWAY





Widening of Route 73 Nynäshamn – Västerhaninge





Double tracks

Nynäsbanan line to Hemfosa

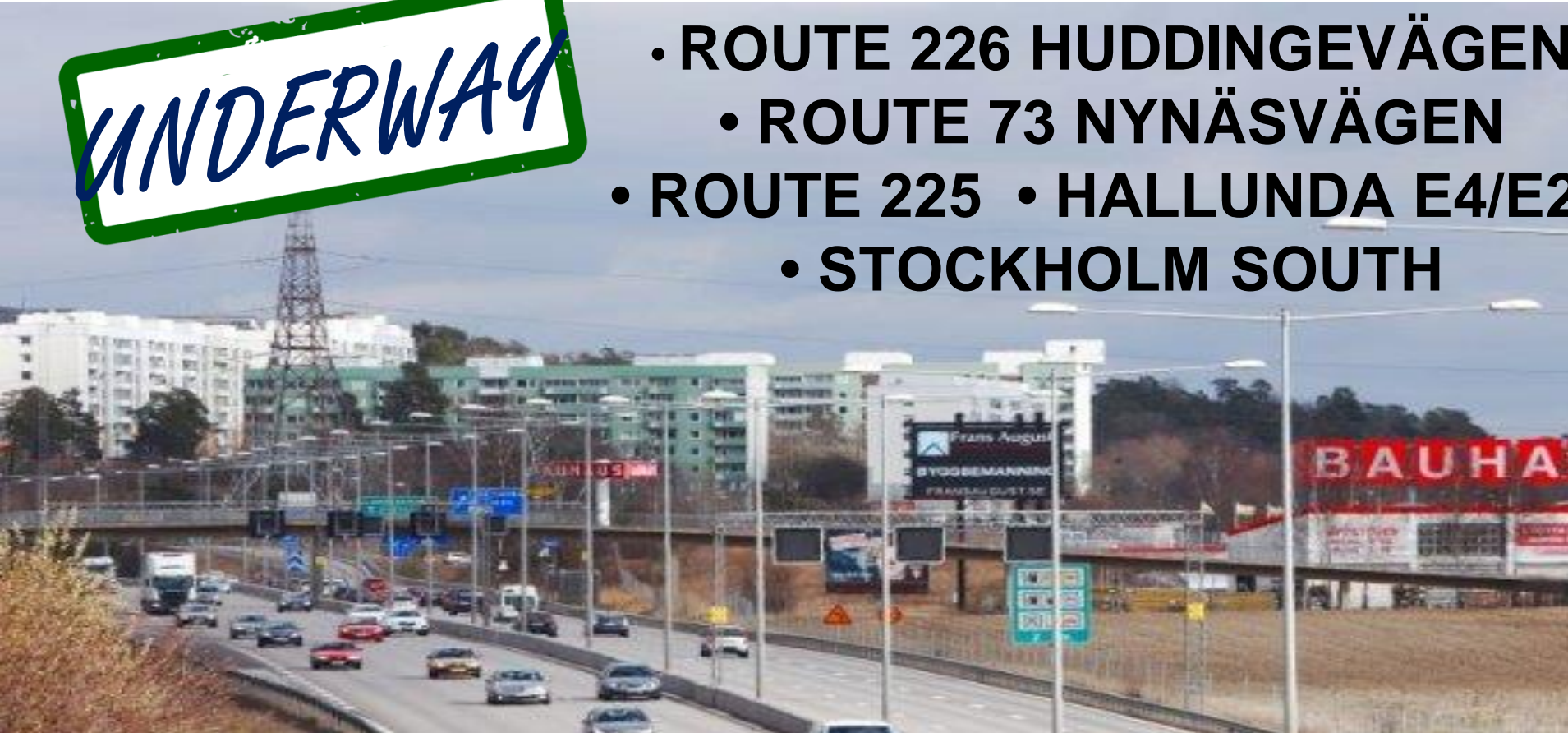




Choice-of-Measure Studies

UNDERWAY

- ROUTE 226 HUDDINGEVÄGEN
 - ROUTE 73 NYNÄSVÄGEN
- ROUTE 225 • HALLUNDA E4/E20
 - STOCKHOLM SOUTH





Cross-connection Södertörn





Double tracks Hemfosa – Nynäshamn





How can urban planning contribute to economic growth?

- Reserve land for business premises and business development
- Offering various kinds of premises and land areas for different types of businesses and companies
- Promote sustainable economic growth through increased urban density and/or more functional mixed structure
- Have a continuous dialogue with the business company to create the right conditions



Nynäs hamns Posten

Start Nyheter Sport Familj Opinion Nöje & Kultur Mer

Sök Lena

Alle avdelningar

BOSTAD 19 oktober 11:00

Nya gator ser dagens ljus när Nynäs hamn växer - så kommer de att heta

18 delningar

Delna på facebook Delna på twitter

Hittar du till Diavoxgränd och Rackarbackstigen i Nynäs hamn? Inte? Det är inte så konstigt. Gatorna finns inte än. De byggs när kvarteren kring den gamla Teliafabriken blir till en ny stadsdel.

Mer läsning

Hotell på Gran Canaria
 Utsikts- och vattenskydd. Kom till Gran Canaria till vintern. 4* Hotell fr. 999 kr
 10 dagar

Bästa sparkonto: 10%
 Hitta bästa med insättningsgaranti! Jämför alla sparkonton här!
 10 dagar

Diavoxgränd kantas av radhus och ska gå mellan Bryggargatan och Industrivägen vid telemasten.
 Illustration: Simonsson Arkitektur

Nynäs hamns Posten

Start Nyheter Sport Familj Opinion Nöje & Kultur Mer

Sök Lena

Alle avdelningar

BOSTAD 19 oktober 06:00

Så ska Nynäs hamns nya stadsdel se ut - 530 nya bostäder i Telegrafområdet

197 delningar

Delna på facebook Delna på twitter

Längs Bryggargatan och Industrivägen i Nynäs hamn ska en ny stor stadsdel med 530 bostäder växa fram. Bland annat blir de planerade lägenheterna i Ericssons gamla kontorsbyggnader granne med nya, vita radhus.

Gratis Kärleksastrologi
 Se Efter Hur Ditt Stjärntecken Påverkar Dina Kärleksrelationer!
 laetse.com

Längs Industrivägen byggs nya tvåvåningsradhus och det gamla kontorshuset blir till lägenheter.





Four focus areas based on corporate priorities

- Local workplaces
 - Local labour force
 - Local attractiveness
 - Local pride
-
- Company visits
 - Regular business visits, sometimes with political leaders
 - Arranging events and business meetings
-
- Newsletter, Facebook
 - We can help find out who owns land/real estate and help companies with contacts



Head of Business Development Jonas Karlsson with business developers Nina Munters, Lena Hentschel and Linnea Gustavsson.

*We have so much more that can and should be done.
Our work has just begun.*

Thank you for your attention!