



SWEDEN 'S DEMOCRATIC SYSTEM

Parliamentary election

To be entitled to vote in the parliamentary election, you must be a citizen of Sweden and be or have been entered in the national population register.

Municipal and county council elections

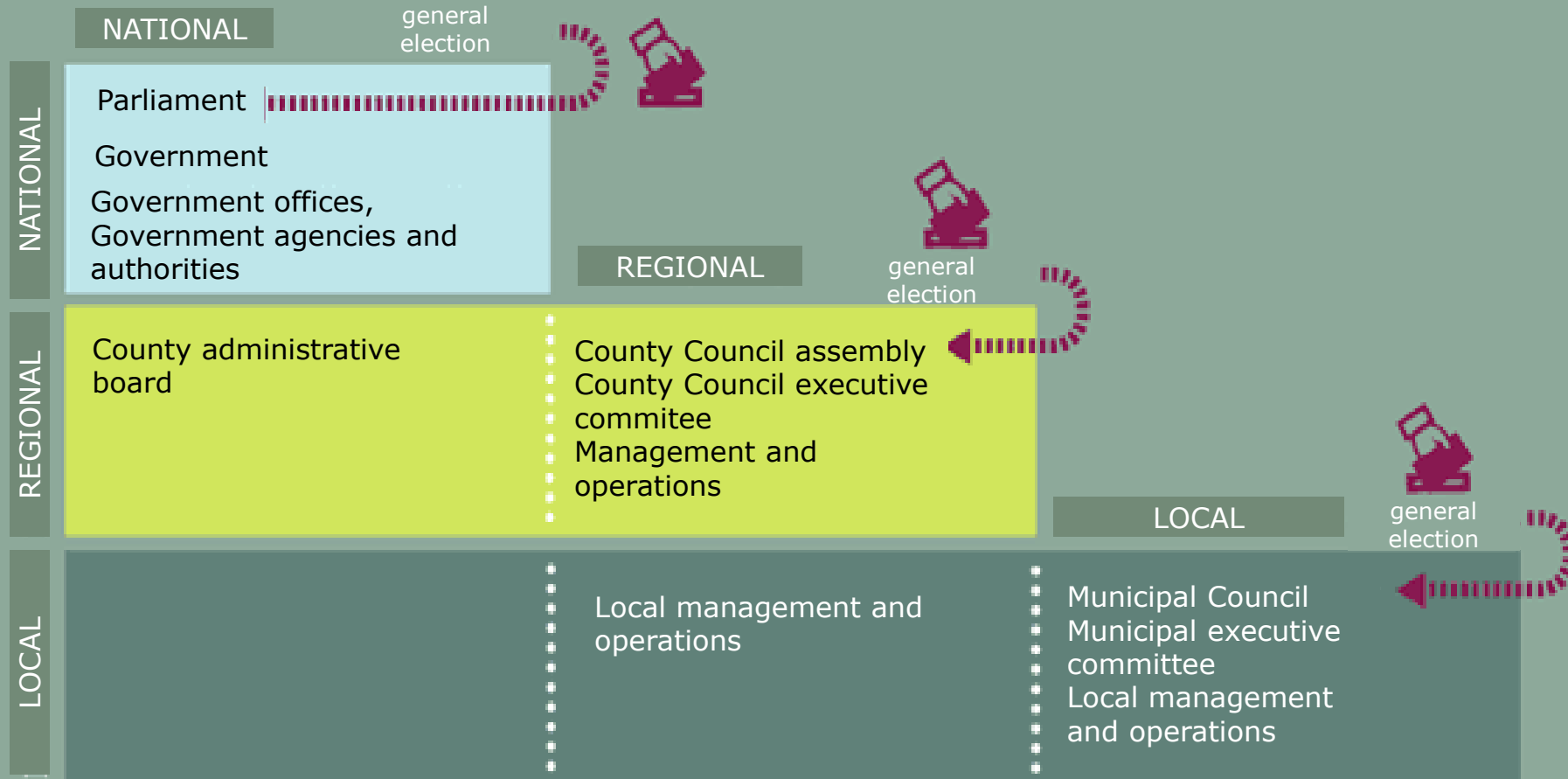
To be entitled to vote in municipal and county council elections, you must be a citizen of Sweden

- or a citizen of another EU member state
- or a citizen of Iceland or Norway
- or have been entered in the population register in Sweden for three consecutive years before election day and be registered in the municipality/county council

However, there are many ways of influencing Swedish politics, for example by joining a political party or sending in comments on reports presented by the Government or by taking part in referendums.



The Swedish model of government administration



National level

At the national level, the Swedish people are represented by the Riksdag (Swedish parliament) which has legislative powers.

Proposals for new laws are presented by the Government which also implements decisions taken by the Riksdag.

The Government is assisted in its work by the Government Offices and central government agencies and administrations.

Examples: the police, the armed forces





Regional level

Sweden is divided into 21 counties. Political tasks at this level are undertaken by the county councils.

The operations of the county council are financed by government grants and county council taxes and charges and are regulated by the Local Government Act. At the regional level there are also county administrative boards which are government bodies in the counties. Some public authorities also operate at regional and local levels, e.g. through county boards.

Examples: health and medical care, public transport





Local level

Sweden has 290 municipalities. Each municipality has an elected assembly, the municipal council, which takes decisions on municipal matters.

The municipal council appoints the municipal executive board, which leads municipality work. Operations are financed by local taxes, government grants, and charges, and are chiefly regulated by the Local Government Act. Other essential legislation for the municipalities includes the Social Services Act and the Education Act.

Examples: schools, child and elder care





Nynäshamn in figures

28 900 inhabitants

3000 local businesses

– 98 % of which have less than 10 employees

400 start-ups /year

2 international ferry/cruise services to Poland and Latvia

2 cruise services to Gotland

5 commuter train stations

9 no resident lives more than nine kilometers from the sea

30 minutes by car from Stockholm

1000 kilometers of coastline and..

1852 islands



An expanding municipality in the Stockholm archipelago

- With highway 73 we are only 30 minutes from Stockholm
- Easy access by train from the Central Station, Stockholm
- Stockholm Norvik Port
- Building projects for housing and companies





Mandate distribution Municipality council election (2014) 2018



Socialdemokraterna	(11) 10
Moderata samlingspartiet	(10) 10
Liberalerna	(3) 2
Miljöpartiet de gröna	(3) 2
Sverigedemokraterna	(4) 6
Sorundanet	(3) 4
Vänsterpartiet	(3) 2
Centerpartiet	(2) 2
Kristdemokraterna	(1) 2
Pensionärspartiet	(1) 1

Total:

41



Social Democrats



Moderates



Liberals



Green environmental party



Sweden Democrats



Local Party: Sorundanet



The left party



The Center party



The christian Democrats

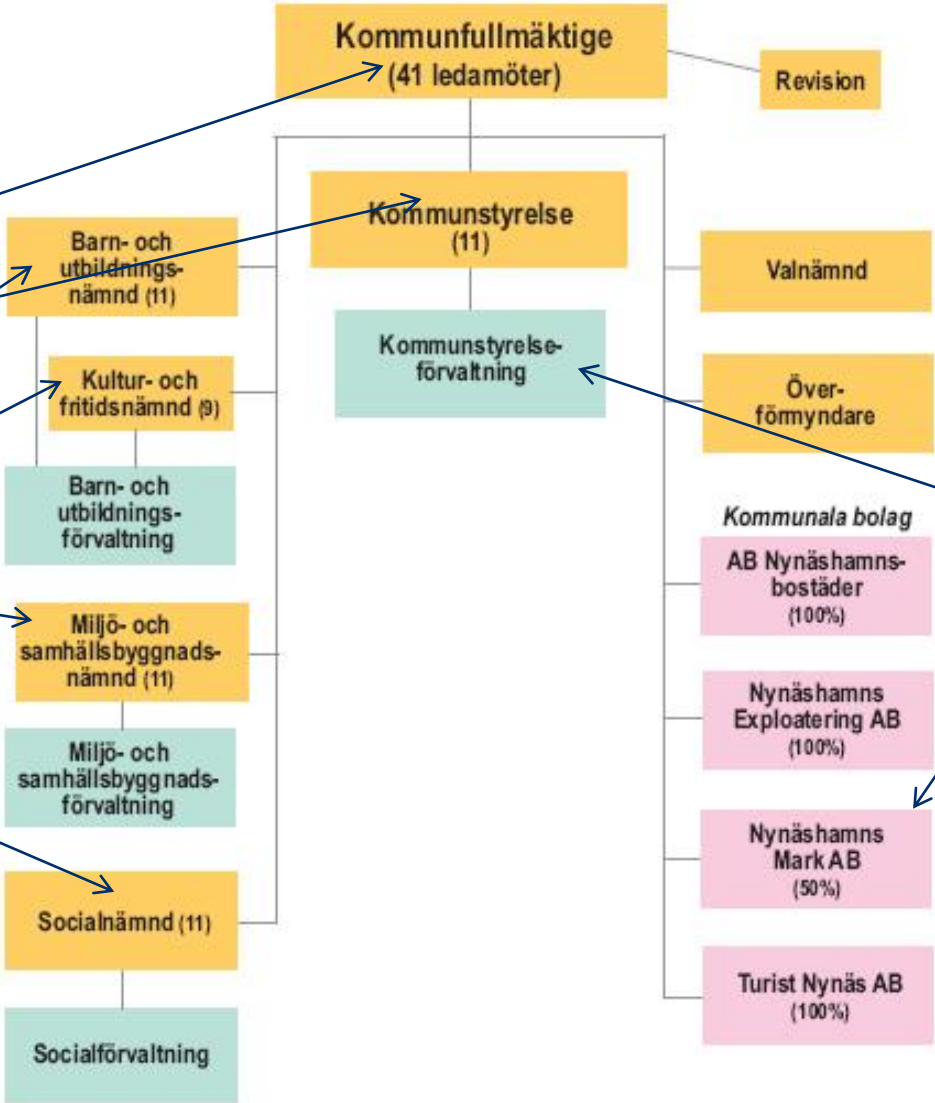


The Pensioner's party

Municipality Organisation



- Municipal council
- Executive board
- Child and education board
- Culture and recreation board
- Environment and planning board
- Social welfare board



Executive Board Administration

Municipality owned corporation



Nynäshamn Municipality

The municipality council consist of 41 members.

Each board consist of 11 members.

Each chairman of board is a full-time politician.

The Municipality administration consist of approximately 2 000 members of staff in total.

All the members of staff retain their posts regardless of the political orientation of the Municipal executive committee that is in power.





In Nynäshamn there are currently three parties that govern the municipality



We take joint responsibility for the municipality's development, financial matters and distribution of mandates and presidium posts.



We have a cooperation programme with a common political platform where we indicate the direction we want to take in relation to a number of important issues.



Unity is a must. If different sentences arise and these cannot be resolved through normal channels, the issue is escalated to specially appointed representatives for the parties for treatment and decision-making.



OUR AIMS:



- We´re working towards more jobs and more inhabitants
- Better infrastructure
- A variety of housing, adapted to peoples´ needs and to the environment
- Cooperation, marketing and fast service to our local businesses and to create new business opportunities
- High quality in our welfare services and better public health



Our political vision

Nynäshamn is the regional leader in Social innovations, Culture, Shipping and Tourism-related businesses. There's plenty of opportunities for fellowship and growth.

Nynäshamn

- where the sea and life meets



Daniel Adborn (L)

Mayor

Deputy Chairman of the Executive Committee

Chairman of the Environment and Community Planning Committee

+46 8 520 681 72 ● +46 76 125 81 72

daniel.adborn@nynashamn.se